

FREE STYLE

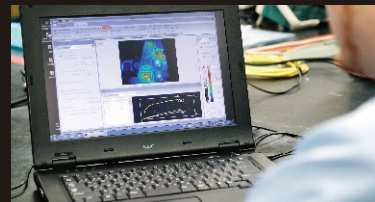
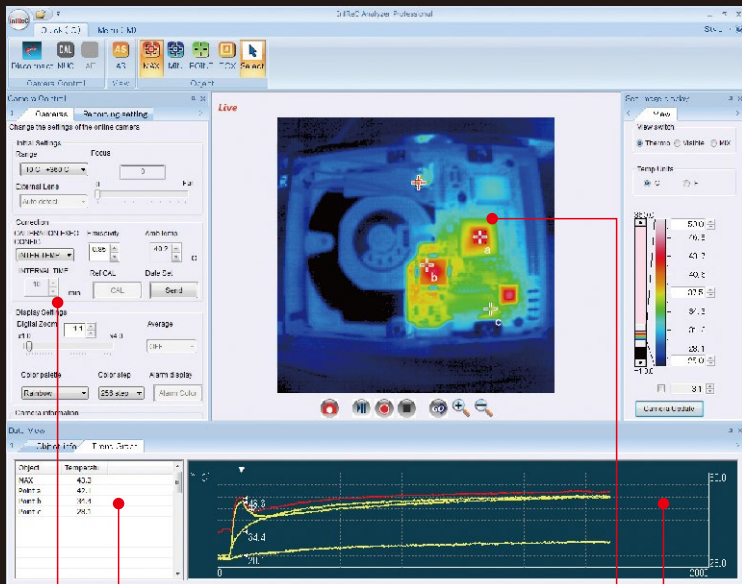
THERMAL IMAGING CAMERA "Thermo FLEX F50"



High Performance Online Analysis Software

InfReC Analyzer N59500 Professional for F50

Online operation from "Camera control" to "Real-time measurement / analysis"



Camera Control

Remote control of measuring temperature range selection, temperature display setting, execution of calibration, and etc., are available from PC.

Real-time Measurement

Point measurement (Max. 10 points), real-time display of maximum/minimum/average temperature inside of the box area.

Real-time Image Display and Data Saving

Real-time display of thermal image, visible image, mixed image, and simultaneous data saving to PC (HDD).

Trend-Graphic Chart Display

Trend-graph is displayed during real-time display. Trend-data is available to export by CSV file.

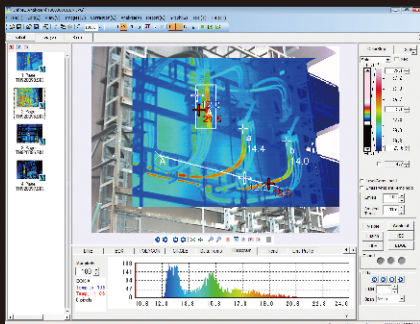
Multi-functional report generating software

InfReC Analyzer N59500 Standard for F50

3-step easy operation by navigation of "Select" => "Analyze" => "Report"

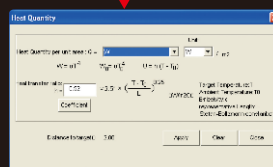
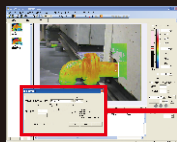
Data Analysis

MAX·MIN·Average temperature, line profile, histogram, trend-graphic chart display, thermal image subtraction, length/area calculation, heat radiation calculation



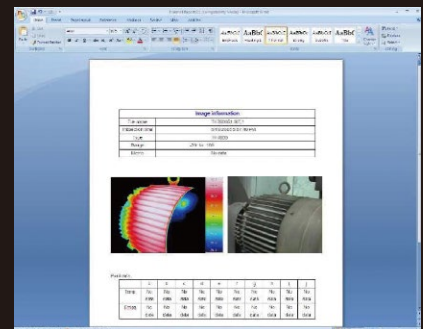
Heat Radiation Calculation

Heat radiation is calculated inside of the specified area. Heat loss of objects can be analyzed.



Report Generation

Thermal image/visible image/graphic display can be inserted onto template of the Excel and the Word



Specification of NS9500 for F50

Item		Specification	Professional	Standard	Lite	
Online* ¹	Control	Camera Control* ²	Range switching, Compensation setting, Display setting, Point setting (5), BOX setting (1)	✓		
	Display	Temperature Scale	Continuous auto, Manual	✓		
		Color Palette* ²	7 kinds (Olive, Rainbow, Iris, Brilliant color, Hot iron, Hot white, Hot black) Gradation (256, 128, 64, 16 colors)	✓		
		Image Display	Mixed display of thermal image / visible image, Digital zoom	✓		
	Measurement	Point Temperature	Specified points (10)* ³ , Max. / Min. temperature of image.	✓		
		BOX Temperature	BOX(10)* ³ , Max./Min./Ave. temperature of image	✓		
		Trend Graph	Specified point, Max./Min./Ave. temperature inside the BOX (CSV output is available)	✓		
	Compensation	Emissivity Compensation	All image, Specified point	✓		
		Calibration (NUC)	Manual, Interval	✓		
	Data Storage	Moving Image Recording* ⁴	Thermal image (SVX), Visible image (AVI), Recording interval: 1/7.5, from 1 to 60[Sec.]	✓		
Still Image Recording* ⁴		JPG	✓			
Setting File		Camera control value / Environmental setting	✓			
Offline	Data File	File Management / Search	Thumbnail display, image/report database Data file search (Condition: File name, date, temperature inside of figure, comment)	✓	✓	✓
	Display	Temperature Scale	Arbitrary setting of Max./Min./Center temperature	✓	✓	✓
		Color Palette	Color 7 kinds / Black & white / Reverse display Gradation (256, 128, 64, 32, 16, 8 colors)	✓	✓	✓
		Image Display	Isothermal line display (ISO), Thermal/visible image display* ⁵ , Digital zoom, Contrast enhancement	✓	✓	✓
		Others	Sound reproduction* ⁶	✓	✓	✓
	Analysis	Point Temperature	Specified points (20), Max./Min. temperature on image.	✓	✓	✓
		Area Temperature	BOX/Polygon/Circle (20 each), Max./Min./Ave. temperature of each figure.	✓	✓	BOX Only
		Peak / Bottom Hold	Max./Min. temperature of all image/specified figure are held and displayed by cursor	✓	✓	
		Line Profile	Temperature profile of specified line is displayed.	✓	✓	✓
		Histogram	All image/Each figure	✓	✓	✓
		Trend Graph	Max./Min./Ave. temperature of point in all image/each figure	✓	✓	
	Compensation	Image Analysis	Thermal image subtraction, Radiation heat loss calculation, Length/area calculation	✓	✓	
		Emissivity Compensation	All image, Specified point, Each figure, Environmental temperature (Background temperature) setting	✓	✓	✓
	Output	Image Compensation	Filtering, Smoothing, Edge enhancement	✓	✓	✓
		Image	Moving image: AVI, Still image: BMP/JPG	✓	✓	✓
		Excel	Temperature data is transferred by Excel format.	✓	✓	✓
		Text (CSV)	Temperature data is transferred by CSV format.	✓	✓	✓
Report Output		MS-Word format, MS-Excel format	✓	✓	✓	
Configuration		Disk for Installation (CD-ROM: operation manual / installation manual)	✓	✓	✓	

*1 NS9500 Professional for F50 (Online program) can be only connected to F50-ONL. *2 Setting range complies with specification of F50-ONL.

*3 Possible number to be displayed on PC image. Number of settings to camera complies with specification of F50-ONL. *4 Recorded data can be played back offline.

*5 Play back is not available when there is no visible image. *6 Play back data when voice was recorded.

Operating Environment

		Professional	Standard / Lite
Hardware	CPU	Core i5 2.0GHz or higher	
	Memory	2.0GB or higher	
	Display	High resolution display of XGA(1024x768) or higher, 65536(16 bit/color) or higher display is required.	
	Disc System	CD-ROM drive HDD:Space of 100MB or more is required for software installation	CD-ROM drive HDD:Space of 30MB or more is required for software installation
	Interface	USB port of USB2.0	
Software	OS	Windows 10 Professional (32bit/64bit) Windows 7 Professional (32bit/64bit)	Windows 10 Home /Professional / Enterprise (32bit/64bit) Windows 7 Ultimate / Professional / Home Premium (32bit/64bit)
	Application	Microsoft Word 2016(32bit/64bit) Microsoft Excel 2016 (32bit/64bit)	

Microsoft, Windows, Word, Excel are trademarks or registered trademarks for Microsoft Corporation in U.S.A. and other countries.
Product names listed in above chart are trademarks or registered trademarks for each company.

Applicable Model, Data Format

Software	Applicable Model	Data Format
Online(Saving data format)	F50-ONL	JPG(still image), SVX(moving image), AVI(moving visible image)
Offline(Playback data format)	F50 series	JPG(still image)

 **NIPPON AVIONICS CO.,LTD.**
<http://www.avio.co.jp/english/>

**Thermal Imaging Department
Industrial Electronic Products Sales Division**

1-5, Nishi-Gotanda 8-chome, Shinagawa-ku,
Tokyo 141-0031 Japan
Phone : +81-3-5436-1614
Fax : +81-3-5436-1395
E-mail : product-irc-e@ml.avio.co.jp



WARNINGS & CAUTIONS

- Before using this product, please carefully read the provided Operation Manual "WARNINGS" & "CAUTIONS" section to ensure proper operation.
- Please do not place the product in high temperature, high humidity or high corrosive gas environments

Distributor: